

Paperless Temperature Chart Recorder



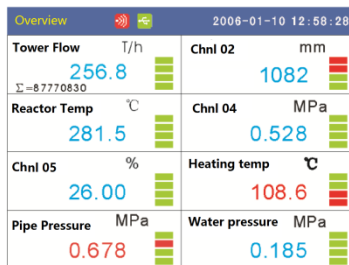
SX6000 Series Paperless temperature chart recorder can max have 16 channels of industrial temperature sensor inputs which is a kind of data acquisition device; it can record the temperature value from thermocouple or RTD. As a digital temperature recorder device it can also display the measured value on the color screen.

Features

- Universal inputs for thermocouple and RTD (thermal resistance)
- Reference Junction Compensation (RJC) function available
- 1~16 channels temperature signal input
- E-thernet function option
- Large capacity storage of FLASH memory chips to store historical data, which will never lose data in case of power-down

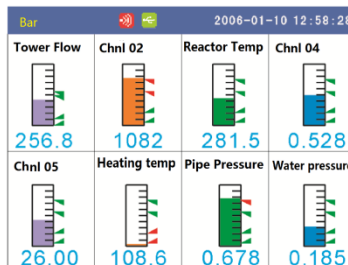
Specifications

Display Screen



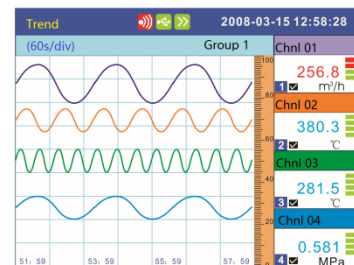
- Overview -

In addition to displaying the test values, digital display can also display the tag number of channels, industrial units, alarm status, and accumulation information.



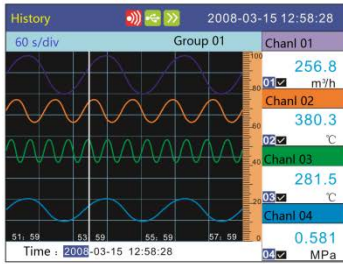
- Bar -

It is convenient and visualized to use bar graph to display the test value. Meantime, it also displays the tag number of channels, industrial units and alarm state information.



- Trend -

Horizontal trend to display values, combine freely the trends and trend colours.



- History -

It can re-appear the historical data stored in memory. Horizontal and vertical display types can be selected.

Chnl	Start	Stop	Type
01	2008-03-15 10:12:43	2008-03-15 10:12:44	LL
02	2008-03-15 10:12:45	2008-03-15 10:12:46	L
04	2008-03-15 10:12:47	2008-03-15 10:12:48	LL
03	2008-03-15 10:12:49	2008-03-15 10:12:50	L
02	2008-03-15 10:12:51	2008-03-15 10:12:52	LL

- Alarm Summary-

It can display the recent alarm time, and the time to remove the alarms.



- Flow Display -

It can display flow, temperature, pressure. On one display in the flow metering system, it can also display frequency, DP and density ,

Dimensions: 144 (W) ×144 (H) ×220 (D) mm
 Net Weight Less than 2.6 kg (exclusive accessories)

Analogy Input Board

Resolution ratio:	16 bit
sampling rate:	1second
Signal terminal withstand Voltage	Min:-24V DC, Max: 24VDC
Sensor Open Circuit Test:	RTD, Thermocouple open circuit
Sensor Open Circuit Response:	RTD, Thermocouple open circuit RTD 4 second Thermocouple 4 second

Display

Display: 5.6-inch TFT color LCD display (320×234points)
 Display color 256
 Group number: 3 groups(1-12 channels),4 group (16 channels)
 Each group can set 4 channels
 Tag No.: 10 characters (Numbers)
 Unit: 7 characters (Numbers)
 Status display: Display screen name, card status, alarm status, USB device status, circular display status, year, month, day, hour, minute, seconds
 Display screen: Measuring data display(overview, digital display, bar graph display, the trend display),the historical trend display, the information display (alarm information, the accumulative reports),functional screen (data backup, printing)

Overview display Display all the channels and alarm
 Trend display: Vertical or horizontal
 History trend: It can display the data stored in memory, it can zoom in
 1/2/4/8/16/32 times
 Alarm It can record 187 alarms

Storage Function

External Storage

Media: U disk
 Format: FAT32
 Mode: File
 Capacity: 8GB

Internal Storage

Media: Flash memory
 Format: Binary system
 Mode: Continuous record
 Capacity:

1-12 channels

Intervals	1 second	2 second	5 second	10 second	15 second	30 second	1 minute	2 minute	4 minute
Time	3 days	6 days	15 days	30 days	45 days	90 days	180 days	360 days	720 days

16 channels

Intervals	1 second	2 second	5 second	10 second	15 second	30 second	1 minute	2 minute	4 minute
Time	40 hours	3 days	8 days	16 days	24 days	48 days	96 days	192 days	384 days

Standard Operation Conditions

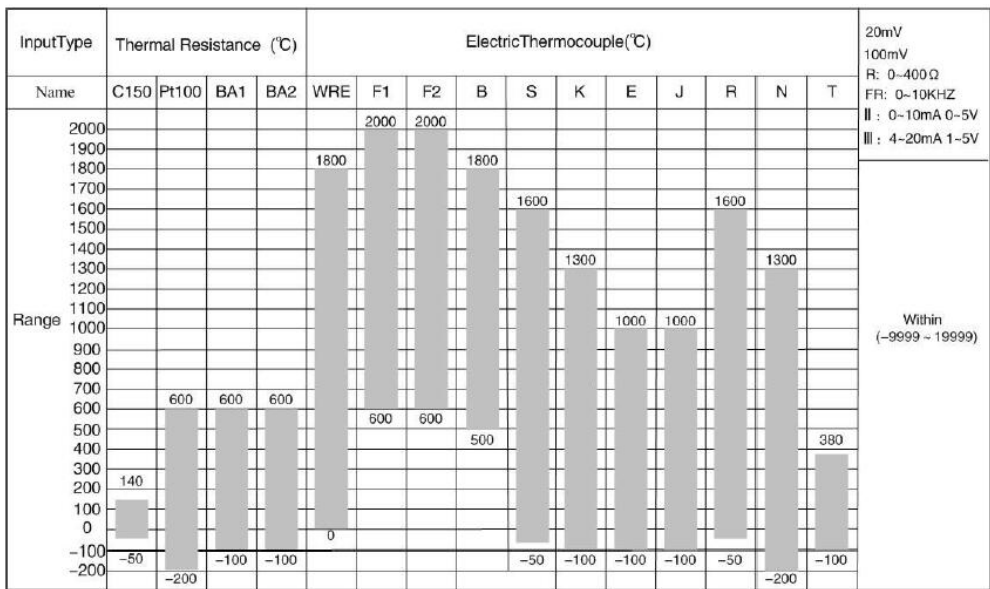
Power supply voltage 220V AC
 Power supply frequency 50Hz
 Ambient temperature 0-50 ° C
 Ambient humidity 0%-85%
 Warm-up time At least 30 minutes after power on
 Installs position Indoor

Input Signals

Input Type	Signal Type	Measuring range	Accuracy	Input Impedance
RTD	PT100	-200.0-650.0 ° C	±0.4° C	---
	Cu50	-50.0-150.0 ° C	±0.4° C	---
	Cu53	-50.0-150.0 ° C	±0.4° C	---
	BA1	-200-650.0 ° C	±0.4° C	---
	BA2	-200-650.0 ° C	±0.4° C	---
	S	-50-1768 ° C	±2° C	10M Ω
	R	-50-1768 ° C	±2° C	10M Ω
	B	500-1820 ° C	±2° C	10M Ω

Thermocouple	K	-200-1372 ° C	±1° C	10M Ω
	N	-200-1300 ° C	±1° C	10M Ω
	E	-200-1000 ° C	±1° C	10M Ω
	J	-200-1200 ° C	±1° C	10M Ω
	T	-200-385 ° C	±1° C	10M Ω
	WRE5-26	0-2310 ° C	±2° C	10M Ω
	WRE3-25	0-2310 ° C	±2° C	10M Ω
	F1	700-2000° C	±2° C	10M Ω
F2	700-2000° C	±2° C	10M Ω	
Frequency	Fr	0-10000 Hz	±1Hz	---

Thermocouple and RTD input range and Measurable Range



Model Selection

1-12 Channels Input Model Selection

Model	Function Code	Specification Code	Description
SX6001			Signal Input 1 channels
SX6002			Signal Input 2 channels
SX6003			Signal Input 3 channels
SX6004			Signal Input 4 channels
SX6005			Signal Input 5 channels
SX6006			Signal Input 6 channels
SX6007			Signal Input 7 channels
SX6008			Signal Input 8 channels
SX6009			Signal Input 9 channels
SX6010			Signal Input 10 channels
SX6011			Signal Input 11 channels

SX6012			Signal Input 12 channels
Function	R		Temperature Record Function
Additional Specification	/T <input type="checkbox"/>	1-4	4-20mA output 1-4 channels *1
	/A <input type="checkbox"/>	1-12	Normal open contact output relays 1-12 channels
	/C <input type="checkbox"/>	2	RS232
		3	RS485
		4	Micro printer interface *2
	/U		USB interface
/L		Accumulation/ report	

*1 SX6009-SX6016 no 4-20mA output

*2 Dedicated micro printer

16 Channels Input Model Selection

Model	Function Code	Specification Code	Description
SX6016			Signal Input 16 channels
Function	R		Record Function
Additional Specification	/A8		Normal open contact output relays 1-12 channels
	/C <input type="checkbox"/>	2	RS232
		3	RS485
		4	Micro printer interface *2
	/U		USB interface
	/L		Accumulation/ report

Customization Function

Specification	Description
/FB <input type="checkbox"/>	1-12 Frequency input 8-40 channels, with 12 VDC power supply to transmitters *3
/FC <input type="checkbox"/>	1-12 Frequency input 8-40 channels, with 24 VDC power supply to transmitters *3
/PT	anti-corrosion paint
/P1	24V DC power supply
/E	Ethernet function

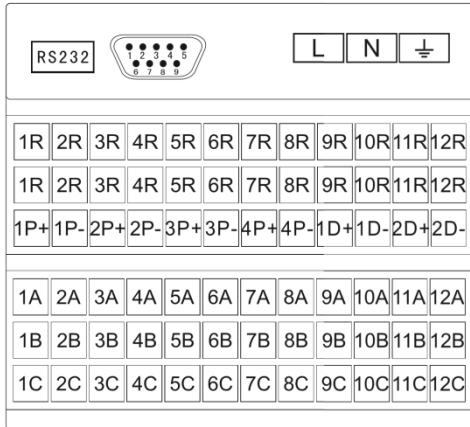
*3 Contact SILVER to choose the frequency inputs channels.

Accessories (sold separately)

Product	Model	Specification
USB Flash disk	860206	8 GB
Communication conversion module	862101	Active RS232/RS485 conversion module
Power filter	863101	220VAC/1:1/50W
Software	864801	MDMR multi-machine data management software

Wiring

SX6001-SX6012 Terminal



SX6016 Terminal

