

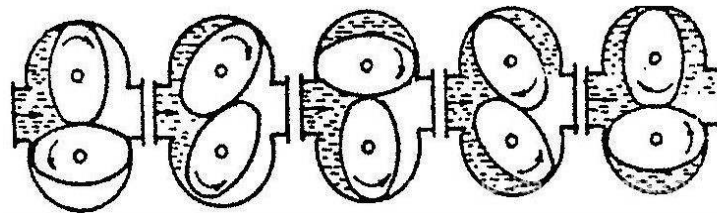
LC-MP Series Corrosive Liquid Micro Flow Meter

LC-MP Series Micro flow meter is a kind of positive displacement flow meter to measure low viscosity and corrosive liquid, it can detect ultra mini liquid flow as low as 1 ml/min, but can still keep accuracy as high as 0.5%F.S. It is a kind of micro PD flow meter for precise flow measurement of mini or low flow liquid, LC-MP series micro flow meter is made with PPS material which can be used to measure corrosive liquid, such as acids and alkalis. PPS (Phenylenesulfide) has good heat resistance; similar like PTFE(Teflon), it can be used as wet parts material with aggressive and corrosive liquid. It can be used to measure micro flow for hydrochloric acid (HCL), sulfuric acid(H₂SO₄), sodium hydroxide(NaOH), water, chemical solution. It is widely used in hydraulic system, lubricating industry and painting industries for fluids low-flow rate measurement.



LC-MP Series Micro flow meter Principle

There is a pair of gears meshing with each other as rotors in the cavity of the micro flowmeter, and the two gears and the chamber respectively form a fixed volume. Liquid flow is measured by calculating the number of flow through the standard volume within a certain period of time.



LC-M Series Technical Specifications

- High accuracy: $\pm 0.5 \sim 1$ FS
- Shell and gear material is PPS
- Fluids temperature: $-30 \sim 80^{\circ}\text{C}$
- Operation pressure: 0.8 Mpa, 116 PSI
- Output: Hall pulse output, NPN or PNP
- Power supply: 5-26V DC
- Process connection: Thread

Model Selection

General

Code	Flow Range	K factor	Shell Material	Gear Material	Process connection
LC-MP1	1-100 ml/min	0.055ml/p	PPS	PPS	1/4" BSP(M)
LC-MP2	3-300 ml/min	0.175ml/p	PPS	PPS	1/4" BSP(M)
LC-MP3	5-500 ml/min	0.25ml/p	PPS	PPS	1/4" BSP(M)
LC-MP4	10-1000 ml/min	0.5ml/p	PPS	PPS	1/2" BSP(M)
LC-MP5	50-5000 ml/min	2.5 ml/p	PPS	PPS	1/2" BSP(M)

Gear Material

Code	Description
PPS	Plastic PPS

Pressure Rating

Code	Description
P8	0.8 Mpa, 116 PSI

Temperature Range

Code	Description
T1	-40~80°C

Explosion Proof

Code	Description
Non	Non Exd

Others

FT With remote flow totalizer ,1m cable

Selection Sample:

LC-MP1-PPS –P8-T1-Non-FT

Specifications:

LC-MP1- Flow range: 1-100 ml/min, PPS material, 1/2" BSP (male) thread;

PPS-Gear material - PPS

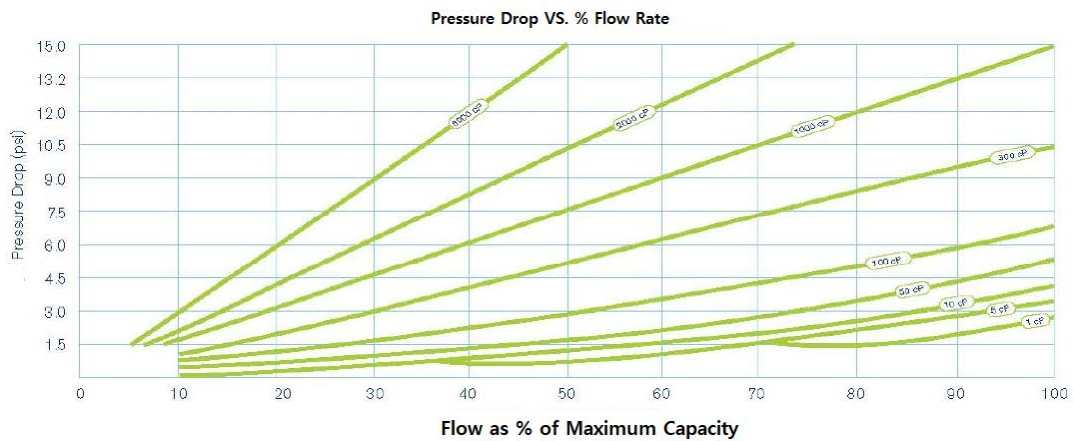
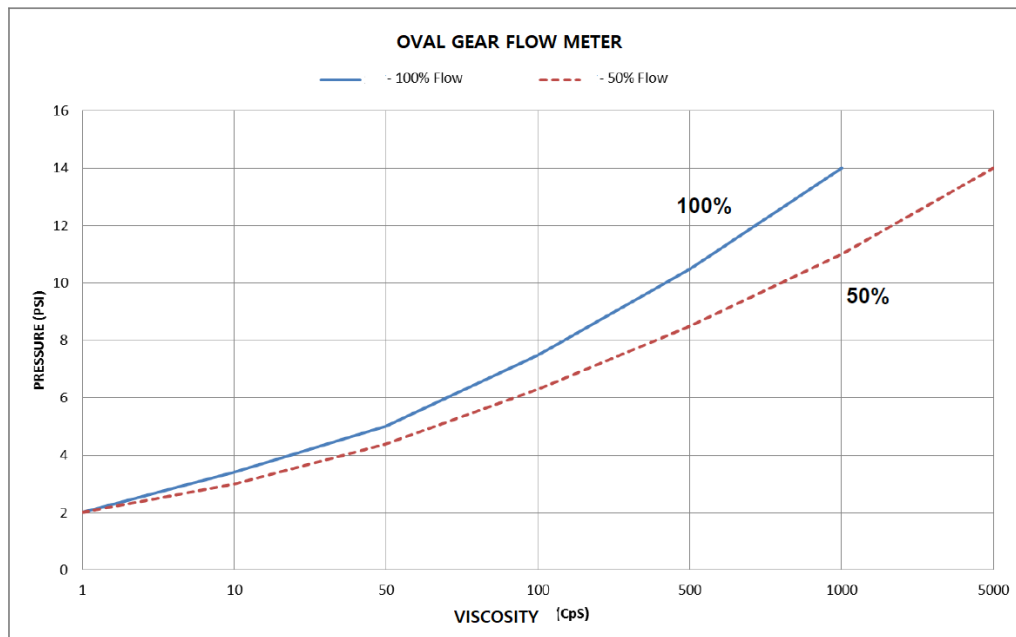
P8-Rated pressure 0.8 Mpa, 116 PSI

T1-Operation temperature: -40~80°C

Non- Non Exd

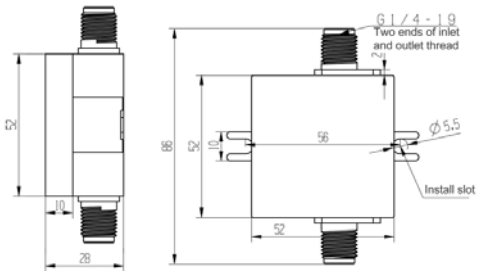
FT- with remote flow totalizer, and 1 m cable.

Flow Curve & Pressure Drop

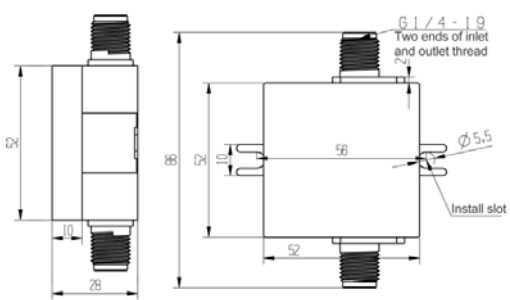


Dimensions

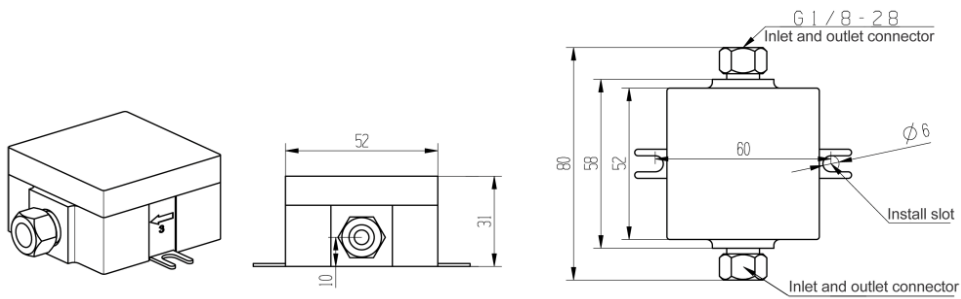
LC-MP1



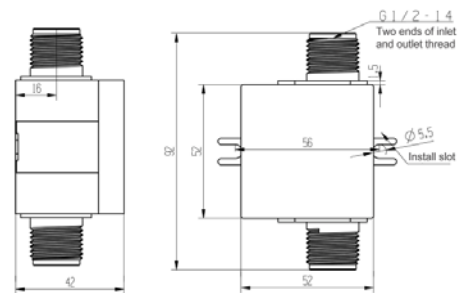
LC-MP2



LC-MP3



LC-MP4



LC-MP5

