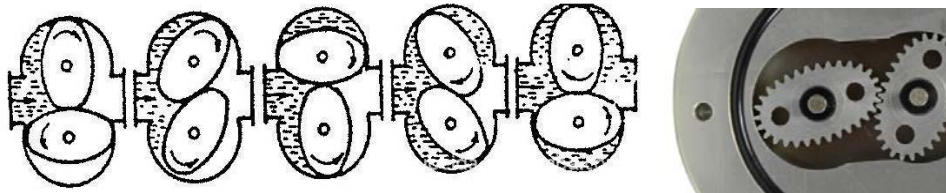


LC-M Series Micro Flow Meter

LC-M Series Micro flow meter is a kind of positive displacement flow meter, it can detect ultra mini liquid flow as low as 0.5 ml/min, but can still keep accuracy as high as 0.5%F.S, It is a kind of micro PD flow meter for precise flow measurement of mini or low flow liquid, the liquid include water, diesel, fuel, lubricant, petrol, oil, chemical, sealant, toluene, glue, detergents, grease, electrolyte, ethylene, additive, syrup, acryiat -composite.,etc . It is widely used in hydraulic system, lubricating industry and painting industries for fluids low-flow rate measurement.



LC-M Series Micro flow meter Principle

There is a pair of gears meshing with each other as rotors in the cavity of the micro flowmeter, and the two gears and the chamber respectively form a fixed volume. Liquid flow is measured by calculating the number of flow through the standard volume within a certain period of time.



LC-M Series Technical Specifications

- High accuracy: +/-0.5FS
- LC-M micro flow meter is suitable for liquid within 2000 mPa.s viscosity
- Fluids temperature: -30~80°C, optional high temperature to 250 °C
- Operation pressure: Standard 725 PSI, max 14503 PSI;
- Output: Hall pulse output, NPN or PNP
- Max frequency: 0.03 ml/p
- Power supply: 4-26V DC
- Process connection: Thread
- Material: stainless steel 316L or aluminum or PPS

	 All Stainless Steel Series	 Aluminum Material Series
Shell Material	SS 316L	Aluminum
Gear material	SS 316L/PPS	Aluminum/PPS/316L
Application	Low corrosive: water, polyurethane	Non-corrosive liquid: petro, grease

Model

General					
Code	Flow Range	K factor	Shell Material	Gear Material	Process connection
LC-M2-AL	0.5-150 ml/min	0.055mL/p	Aluminum	PPS	G1/8"
LC-M2-SS	0.5-150 ml/min	0.055mL/p	SUS 316L	PPS	G1/8"
LC-M5.2-AL	1-400 ml/min	0.11mL/p	Aluminum	316L/PPS	G1/8"
LC-M5.2-SS	1-400 ml/min	0.11mL/p	SUS 316L	316L/PPS	G1/8"
LC-M5.1-AL	1~800ml/min	0.25mL/p	Aluminum	316L/PPS	G1/8"
LC-M5.1-SS	1~800ml/min	0.25mL/p	SUS 316L	316L/PPS	G1/8"
LC-M6-AL	0.5~100 L/H	0.5mL/p	Aluminum	PPS	G1/4"
LC-M6-SS	0.5~100 L/H	0.5mL/p	SUS 316L	316L/PPS	G1/4"
LC-M9-AL	6~600 L/H	2.5mL/p	Aluminum	316L/PPS/AL	G1/4"
LC-M9-SS	6~600 L/H	2.5mL/p	SUS 316L	316L/PPS	G1/4"
LC-M12-AL	0.3~30 L/min	8.5mL/p	Aluminum	PPS/AL	G1/2"
LC-M12-SS	0.3~30 L/min	13.5mL/p	SUS 316L	316L/PPS	G1/2"
LC-M25-AL	0.5~100L/min	21.5mL/p	Aluminum	PPS/AL	G1"
LC-M25-SS	0.5~100L/min	33.5mL/p	SUS 316L	316L/PPS	G1"
Gear Material					
Code	Description				
SS	Stainless steel 316L				
PPS	Plastic PPS				
AL	Aluminum				
Pressure Rating					
Code	Description				
P1	1.6 Mpa,232 PSI				
P2	2.5Mpa,362 PSI				
P3	3.2 Mpa,464 PSI				
P5	4 Mpa,580 PSI				
P6	5Mpa,725 PSI				
P7	Others and please specify				
Temperature Range					
Code	Description				
T1	-40~ 80°C				
T4	-40 ~120 °C				
T2	-40~150°C (only for stainless steel 316L)				
T3	-40~300°C (only for stainless steel 316L)				
Explosion Proof					
Code	Description				
Non	Non Exd				
Exd	Explosion proof Exd IIB T4				
Others					

FT	With remote flow totalizer ,1m cable
----	--------------------------------------

Selection Sample:

LC-M5.1-SS-SS-P1-T1-Non-FT

Specifications:

LC-M5.1.SS- Flow range: 1~800ml/min, SUS 316L shell material, G1/8 thread;

SS-Gear material - Stainless steel 316L

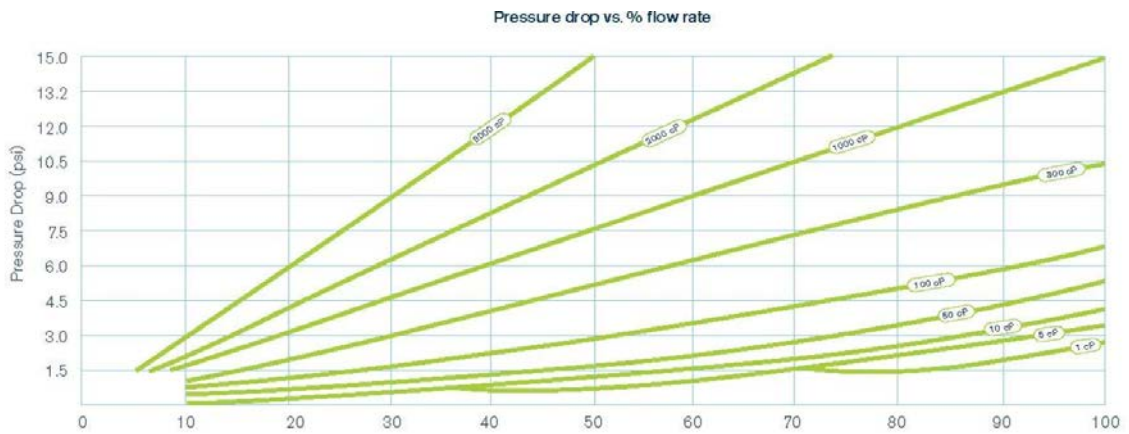
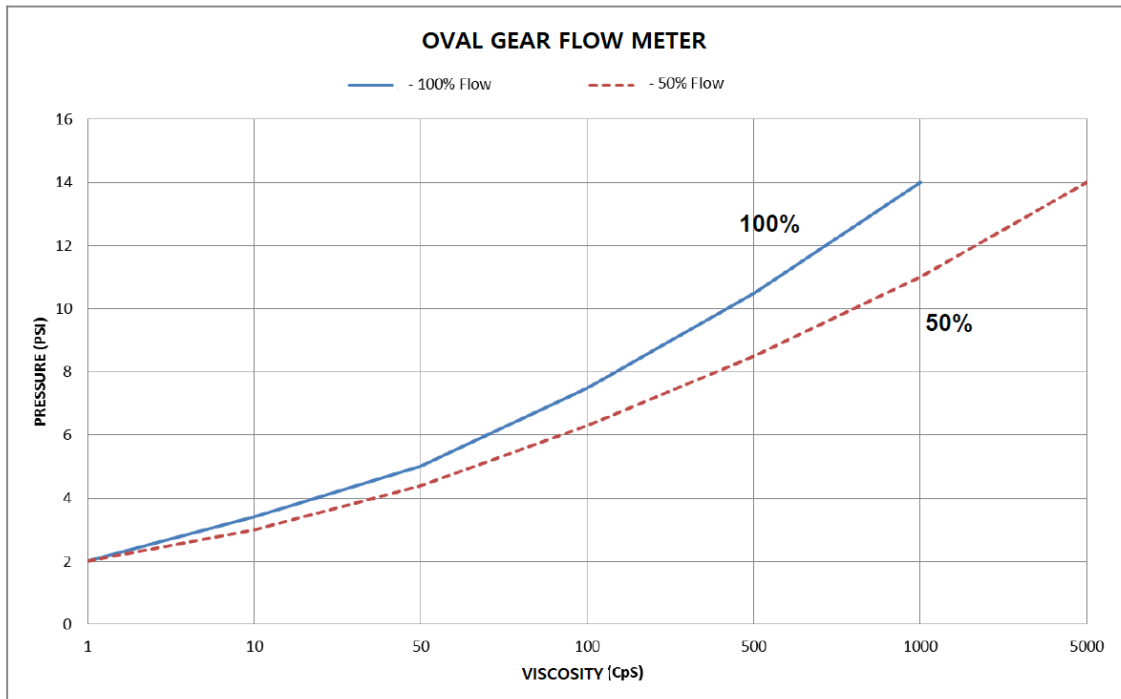
P1-Rated pressure 1.6Mpa

T1-Operation temperature: -40~80°C

Non- Non Exd

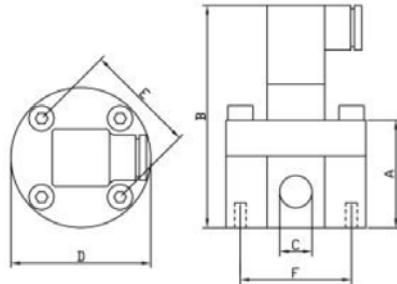
FT- with remote flow totalizer, and 1 m cable.

Flow Curve & Pressure drop



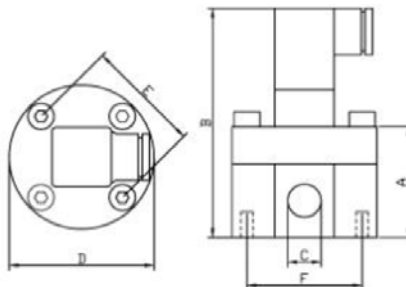
Dimensions

LC-M-Stainless steel 316L Material Dimensions



Item	M2.1	M5	M5.1	M6	M9	M12	M25
A	38	35	37.5	40	46.5	56	72
B	70	68	69	72	81	91	107
C	G1/8	G1/8	G1/8	G1/4	G1/4	G1/2	G1
D	39	39	49	49	64	89	113.5
E	M4*31	M4*31	M4*42	M4*42	M5*54	M5*80	M6*103
F	M4*31	M4*31	M4*42	M4*42	M5*54	M5*50	M6*60

LC-M-AL- Aluminum Material Dimensions



Item	M2.1	M5	M5.1/M6	M9	M12	M25
A	30	30	30	40	44	58
B	62	62	62	75	79	93
C	G1/8	G1/8	G1/8	G1/4	G1/2	G1
D	39	39	49	64	84	99
E	M4*31	M4*31	M4*42	M5*54	M5*70	M6*90
F	M4*31	M4*31	M4*42	M5*54	M5*72	M6*63.6